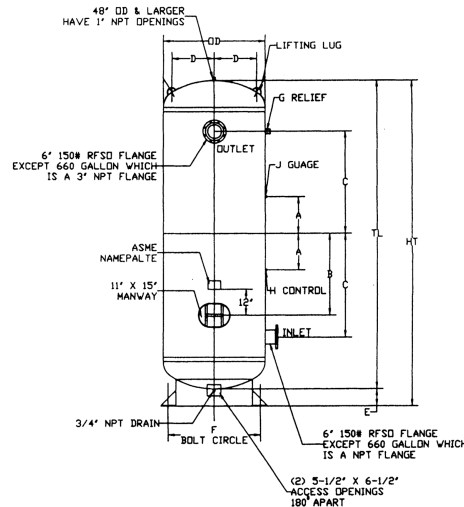


# VERTICAL ASME AIR RECEIVER/ CHILL WATER STORAGE TANKS



PART NUMBER	ACTUAL VOLUME	CUBIC FEET	DIAMETER OD	LENGTH TL	HEIGHT HT	W.P.	WEIGHT
IAR-660	660 GAL	88.2	42	117	125	137	1180
IAR-660X	660 GAL	88.2	42	117	125	200	1570
IAR-1060	1060 GAL	141.7	48	144	152	137	1802
IAR-1060X	1060 GAL	141.7	48	144	152	200	2450

PART NUMBER	A (IN.)	B (IN.)	C (IN.)	D (IN.)	E (IN.)	F (IN.)	G (IN.)	H (IN.)	J (IN.)
IAR-660	13-1/2	24-1/2	41-1/2	17	8	39-1/2	2	1/2	1/4
IAR-660X	13-1/2	24-1/2	41-1/2	17	8	39-1/2	2	1/2	1/4
IAR-1060	16	38	48	20	8	39-1/2	2	1/2	1/4
IAR-1060X	17	38	48	20	8	39-1/2	2	1/2	1/4

Larger sizes can be fabricated to meet your needs. Options include Relief Valves, Pressure Gauges and manual or automatic underdrains. Please contact us for information.

**USE:** For Storage of Compressed Air/Chill Water Storage

**SPECIFICATION:**

Carbon Steel Construction

Maximum Temperature 650° F

Primed & Painted Exterior

See Column for Working Pressure of Tank (W.P.)

Dimensions are subject to change without notice, please confirm actual dimensions with factory at time of order.

JOB NAME \_\_\_\_\_  
 LOCATION \_\_\_\_\_  
 \_\_\_\_\_  
 CONTRACTOR \_\_\_\_\_  
 CONTRACTOR P.O. NO. \_\_\_\_\_

ITEMS	QUANTITY
_____	_____
_____	_____
_____	_____
_____	_____
_____	_____



1005 E. Houston  
 Broken Arrow, OK 74012  
 Toll Free: 866-204-5229  
 PH: 918-317-0401  
 FAX: 918-317-0407  
 www.wheatleyhvac.com  
 e-mail: sales@globalflowproducts.com