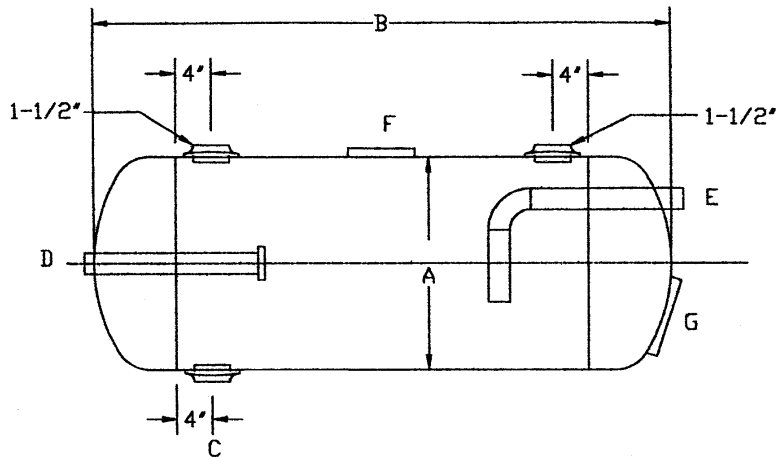


FLASH TANK



STOCKED UNITS

PART NUMBER	ANK VOLUME (ACTUAL)	DIA A (IN.)	LENGTH B (IN.)	DRAIN C (IN.)	INLET D (IN.)	OUTLET E (IN.)	VENT F (IN.)	WEIGHT	WORKING PRESSURE
FT-015	15 GALLONS	12	33	1	2	1-1/2	2	70	200 PSI
FT-018	18 GALLONS	12	39	2	2	2	3	75	200 PSI
FT-030	30 GALLONS	14	48	2-1/2	2	2	3	85	200 PSI
FT-048	48 GALLONS	18	48	3	2	2	3	115	200 PSI

NON-STOCKED UNITS AVAILABLE*

PART NUMBER	ANK VOLUME (ACTUAL)	DIA A (IN.)	LENGTH B (IN.)	DRAIN C (IN.)	INLET D (IN.)	OUTLET E (IN.)	VENT F (IN.)	WEIGHT	WORKING PRESSURE
FT-024	24 GALLONS	14	39	1	1-1/2	1-1/2	2	70	200 PSI
FT-080	80 GALLONS	24	46	2	2	2	3	150	125 PSI
FT-125	125 GALLONS	30	48	2-1/2	2	2	3	255	125 PSI
FT-180	180 GALLONS	36	48	3	2	2	3	345	125 PSI

USE: Designed for flashing of high pressure condensate into steam and low pressure heating supply mains. These also reduce steam pressure prior to returning to either condensate tanks, boilers, or discharge into sewer mains.

SPECIFICATIONS:

Carbon Steel Construction
Maximum Temperature 450° F

ASME Section VIII, Division I, Stamped with Documentation
Working Pressure: See Chart Above
Primed & Painted Exterior

STANDARD UNIT INCLUDES THE FOLLOWING:

Drop Leg (E)

4" x 6" Handhole on Diameters 12"-36" (G)
Perforated Spray Pipe (D)

* Please Contact Us For Lead Time

Dimensions are subject to change without notice, please confirm actual dimensions with factory at time of order.

JOB NAME _____
LOCATION _____
CONTRACTOR _____
CONTRACTOR P.O. NO. _____

ITEMS	QUANTITY
_____	_____
_____	_____
_____	_____
_____	_____
_____	_____
_____	_____



1005 E. Houston
Broken Arrow, OK 74012
Toll Free: 866-204-5229
PH: 918-317-0401
FAX: 918-317-0407
www.wheatleyhvac.com
e-mail: sales@globalflowproducts.com