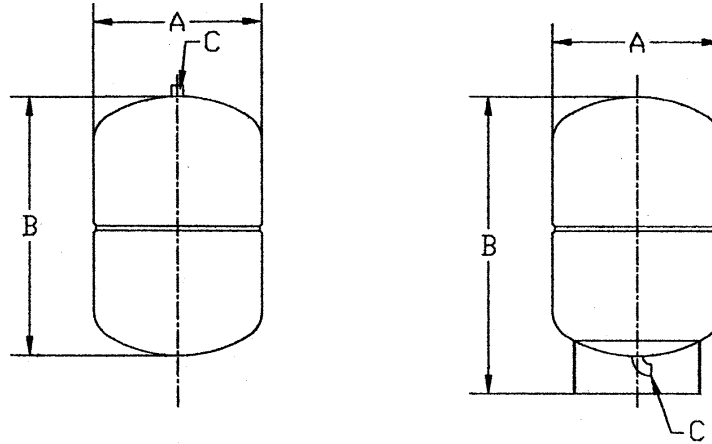


POTABLE DIAPHRAGM TANK (non-code)



PART NUMBER	TANK VOLUME	DIAMETER A (IN.)	LENGTH B (IN.)	INLET/OUTLET C (IN.)	WEIGHT	WORKING PRESSURE
DPT-002	2.1	8.03	11.82	1/2	5	125 PSI
DPT-005	5	10.63	16.15	1/2	8	125 PSI
DPT-006	6.5	12.6	13.98	1/2	10	125 PSI
DPT-009	9	15.75	15.36	1/2	19	125 PSI
DPT-013-STD	13.5	15.75	23.25	1	23	125 PSI
DPT-021-STD	21	15.75	33	1	42	125 PSI
DPT-027-STD	27	19.69	31	1-1/4	46	125 PSI
DPT-040-STD	40	19.69	40	1-1/4	64	125 PSI
DPT-053-STD	53	23.63	42.36	1-1/4	90	125 PSI
DPT-080-STD	80	25.6	47.50	1-1/4	119	125 PSI
DPT-119-STD	119	30.52	52	1-1/4	146	125 PSI

*STD: Stand Model

*All Others: In-Line Model

USE: Designed for storage of domestic potable well water and pressure boost applications. Diaphragm material is suitable for domestic water applications. Installation of tank will help eliminate constant pump use and help prolong pump life. Excellent for backflow applications.

SPECIFICATIONS:

Non-Code

Working Pressure: See Table Above

Powder Coated Epoxy Finish Exterior

Carbon Steel Construction

Maximum Temperature 210° F

Permanent Separation of Air and Water

Dimensions are subject to change without notice, please confirm actual dimensions with factory at time of order.

JOB NAME _____
LOCATION _____

CONTRACTOR _____
CONTRACTOR P.O. NO. _____

ITEMS	QUANTITY
_____	_____
_____	_____
_____	_____
_____	_____
_____	_____



1005 E. Houston
Broken Arrow, OK 74012
Toll Free: 866-204-5229
PH: 918-317-0401
FAX: 918-317-0407

www.wheatleyhvac.com

e-mail: sales@globalflowproducts.com