

# ASME Tangential Air Separators

## Features:

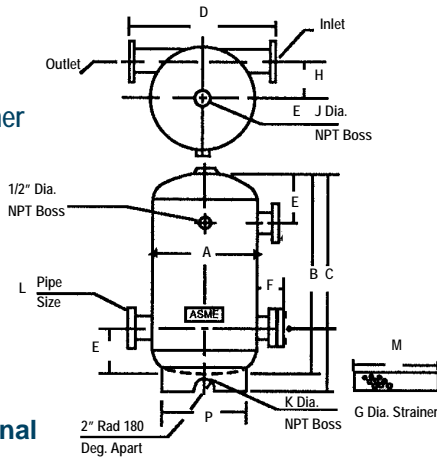
- n ASME Constructed and stamped
- n 125 PSIG design pressure
- n 375°F maximum operating temperature
- n Carbon steel construction
- n Tangential design results in small unit
- n Provides air free fluid flow which protects against damage and system noise
- n Helps prevent waterlogged compression tanks
- n Stainless steel strainer

- n 2" and 2 1/2" Pipe sizes are NPT
- n 3" and larger pipe sizes are flanged
- n 2" and 2 1/2" strainer access is Pipe Cap
- n Grooved inlet and outlet connections are available on all sizes

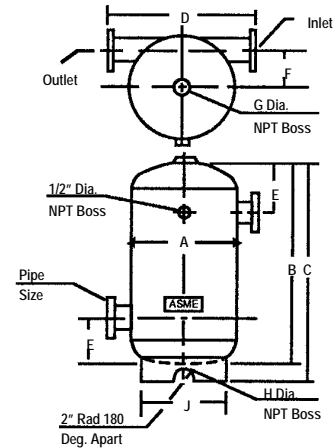
## Options:

- n Higher ASME working pressures available
- n Larger sizes through 36"
- n Special materials of construction ASME available
- n Grooved connections available

Separator with Strainer



Separator without Strainer



Dimensional Data

Model No.	Pipe Size	With Strainer—Dimensions in Inches												Ship Wt.	
		A	B	C	D	E	F	G	H	J	K	L	M		P
TASS020	2	12	19 1/2	22 1/2	16 5/8	5 1/2	2 1/2	2	4 5/8	1 1/4	1	2	16 1/2	9 1/2	49
TASS025	2 1/2	12	19 1/2	22 1/2	16 5/8	5 1/2	2 3/4	2 1/2	4 1/8	1 1/4	1	2 1/2	16 1/2	9 1/2	64
TASS030	3	12	19 1/2	22 1/2	19 3/4	5 5/8	2 1/2	3	3 3/4	1 1/4	1	3	17 1/8	9 1/2	69
TASS040	4	14	29	32	21 3/4	9 1/8	2 1/2	4	4 1/4	1 1/2	2	4	19 1/2	11 1/2	111
TASS050	5	14	29	32	21 3/4	9 1/8	2 1/2	5	3 3/4	1 1/2	2	5	19 3/4	11 1/2	138
TASS060	6	20	41	44	28	13 1/4	2 1/2	6	6 1/4	2	2	6	25	18	236
TASS080	8	20	41	44	28	13 1/4	3	8	5 5/8	2	2	8	29	18	359
TASS100	10	30	58	60 1/2	41	19	3 1/2	10	9 1/8	2	2	10	25 1/2	24	663
TASS120	12	30	58	60 1/2	41	19	3 1/2	12	8 1/8	2	2	12	26 1/2	24	747
TASS140	14	36	75 1/2	78	46 5/8	22	3 1/2	14	10 3/8	2	2	14	42 1/4	30	1493

Model No.	Pipe Size	Without Strainer—Dimensions in Inches									Ship Wt.
		A	B	C	D	E	F	G	H	J	
TAS020	2	12	19 1/2	22 1/2	16 5/8	5 1/2	4 5/8	1 1/4	1	9 1/2	41
TAS025	2 1/2	12	19 1/2	22 1/2	16 5/8	5 1/2	4 1/8	1 1/4	1	9 1/2	56
TAS030	3	12	19 1/2	22 1/2	19 3/4	5 5/8	3 3/4	1 1/4	1	9 1/2	59
TAS040	4	14	29	32	21 3/4	9 1/8	4 1/4	1 1/2	2	11 1/2	97
TAS050	5	14	29	32	21 3/4	9 1/8	3 3/4	1 1/2	2	11 1/2	118
TAS060	6	20	41	44	28	13 1/4	6 1/4	2	2	18	201
TAS080	8	20	41	44	28	13 1/4	5 5/8	2	2	18	299
TAS100	10	30	58	60 1/2	41	19	9 1/8	2	2	24	563
TAS120	12	30	58	60 1/2	41	19	8 1/8	2	2	24	647
TAS140	14	36	75 1/2	78	46 5/8	22	10 3/8	2	2	30	1366

Sizes 16, 18, 20 and larger available upon request

JOB NAME \_\_\_\_\_  
 LOCATION \_\_\_\_\_  
 \_\_\_\_\_  
 \_\_\_\_\_  
 CONTRACTOR \_\_\_\_\_  
 CONTRACTOR P.O. NO. \_\_\_\_\_

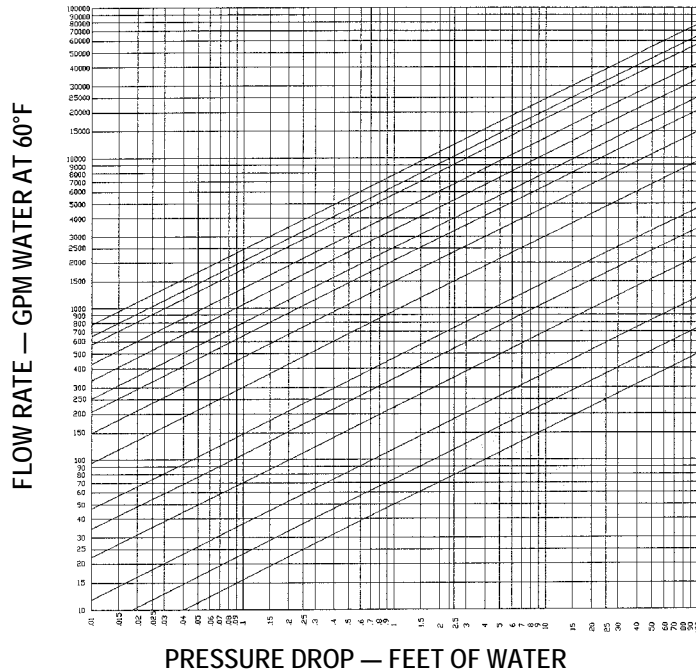
ITEMS	QUANTITY
_____	_____
_____	_____
_____	_____
_____	_____
_____	_____



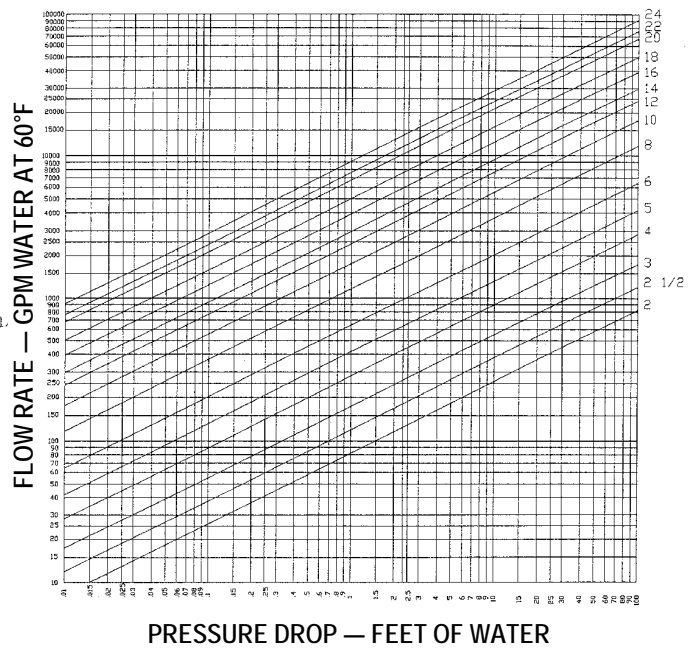
1005 E. Houston  
 Broken Arrow, OK 74012  
 Toll Free: 866-204-5229  
 PH: 918-317-0401  
 FAX: 918-317-0407  
 www.wheatleyhvac.com  
 e-mail: sales@globalflowproducts.com

## Air Separator Pressure Drop Charts

Air Separator with Strainer

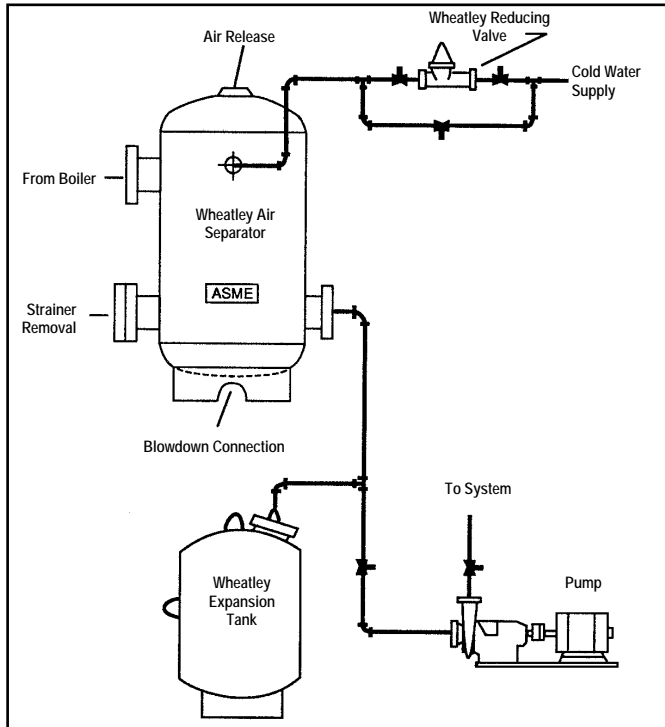


Air Separator without Strainer



## Typical Piping Details

With Bladder Type Tanks (WPA/WFA Series)



With Plain Steel Tanks (WPS Series)

