

# Commercial Deluxe Energy Saver Gas-Model

**3NA-725-80T-D ASME CODE**



**FEATURES:**

**Non-cfc foam insulation** R - value 16

**Vitraglas® lined tank** Storage tanks are protected from the corrosive effects of hot water by an exclusive ceramic porcelain-like coating. Vitraglas® provides a tough interior surface for storage tanks, which must withstand the wearing effects of high volume and high temperature hot water.

**Fuel damper** Automatic fuel damper located at the blower outlet reduces stand-by loss, saving money and fuel.

**T&P relief valve installed**

**Spark ignition** Spark ignition eliminates the constant burning pilot used on other commercial water heaters. This device results in savings of pilot gas during stand-by periods. (115v AC Required)

**Three magnesium anode rods** Employed to provide an extra measure of corrosion prevention for longer life.

**Hand hole cleanout** allows inspection of tank interior and facilitates removal of water heater's principal deterrent to long life - accumulated lime and sediment deposits.

**Controls** Electric thermostat adjustable to any temperature up to 180°F. An energy Cut-off (E.C.O.) shuts off all gas in event of an overheat condition. An electronic module shuts off the main flow of gas in four seconds in the event of a pilot failure.

**ASME code, AGA Certified, C.E.C.**

**115V AC Required**

**80 gallon storage tank**

**725,000 BTUH input-Nat. Gas/703 GPH at 100° F rise**

**Three year limited warranty** Protects your investment in a quality glass lined heater. If the tank leaks for reasons of faulty materials, workmanship, or corrosion within the warranty period, the heater will be replaced with a comparable heater of our manufacture. (Exclusive of all shipping and reinstallation costs.) See complete copy of the warranty included with the heater.

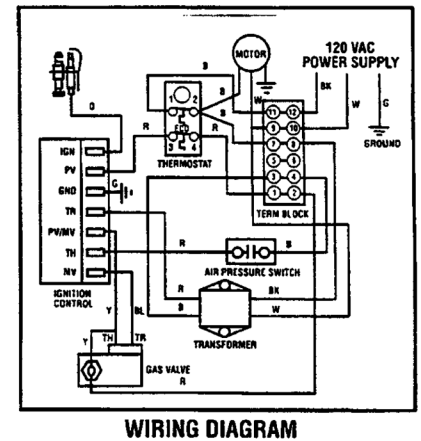
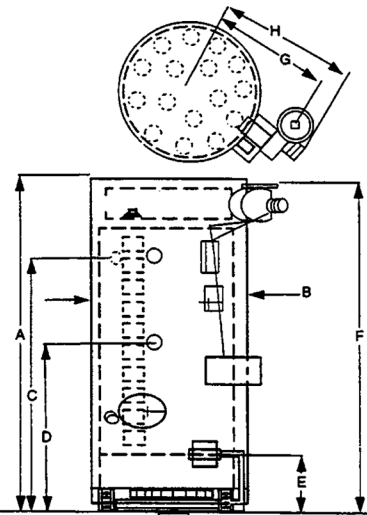
**One year limited parts warranty** These quality components are manufactured for us by industry leaders and will be replaced in the event of failure during the parts warranty period (Exclusive of all shipping and reinstallation costs.)



JOB NAME _____
LOCATION _____
_____
CONTRACTOR _____
CONTRACTOR P.O. NO. _____

ITEMS	QUANTITY
_____	_____
_____	_____
_____	_____
_____	_____
_____	_____

### Commercial Deluxe Energy Saver Gas-Model 3NA-725-80T-D



**DIMENSIONS** Includes installed T&P Valve, Spark Ignition and Flue Damper device in blower outlet.

MODEL	DIMENSIONS IN INCHES														WEIGHT (lbs.)
	A HT.	B DIA.	C HW OUTLET	D CW INLET	E GAS CONN.	F VENT HT.	G VENT C/L	H DR. DIV. RADIUS	I VENT	GAS CONN.	WATER CONN.	WORK PRESS.	TEST PRESS.	HT. TO T&P VALVE	ASME
3NA-725-80T-D	79 <sup>9</sup> / <sub>8</sub>	28	64 <sup>1</sup> / <sub>4</sub>	28 <sup>7</sup> / <sub>8</sub>	20 <sup>3</sup> / <sub>8</sub>	79 <sup>1</sup> / <sub>8</sub>	19 <sup>9</sup> / <sub>8</sub>	27 <sup>5</sup> / <sub>8</sub>	8	1*	1 <sup>1</sup> / <sub>2</sub>	150 PSI	300 PSI	64 <sup>1</sup> / <sub>4</sub>	810

MODEL	STORAGE GALLONS	GAS	BTUH INPUT	TEMP RISE °F	DIMENSIONS IN INCHES										
					40°	50°	50°	70°	80°	90°	100°	110°	120°	130°	130°
3NA-725-80T-D	80	NAT.	725,000	G P H	1757	1406	1172	1004	879	781	703	639	586	541	502
				G P H	29.3	23.4	19.5	16.7	14.6	13.0	11.7	10.6	9.8	9.0	8.4

The above recovery rates are based on ASHRAE 90.1b 1992 minimum efficiency requirements.

This water heater meets or exceeds the performance standards established under ASHRAE standard 90.1b 1992.

#### Suitable for Water (Potable) Heating and Space Heating

Toxic chemicals, such as those used for boiler treatment, shall NEVER be introduced into this system. This unit may NEVER be connected to any existing heating system or component(s) previously used with a non-potable water heating appliance.

The 3NA-725-80T-D is design certified by the American Gas Association for up to 180° F application as both an Automatic Instantaneous Heater and an Automatic Circulating Tank Heater. Can be used as a single unit or in multiples connected in parallel with Uniflo manifolds.

115V AC Required.

**Sample Specification:** The water heater shall be a RECO USA model 3NA-725-80T-D with a storage capacity of 80 gallons, a minimum natural gas input of 725,000 BTUH, and a minimum recovery of 703 GPH at 100°F application, either with or without a separate storage tank. The Vitraglas® vitreous lined tank shall have three extruded magnesium anode rods and a bolted hand hole clean-out. In addition to the primary control system the heater shall be equipped with an A.G.A. design certified automatic gas shut-off. The entire installation shall be made in compliance with state and local codes and ordinances.

Dimensions and specifications subject to change without notice in accordance with our policy of continuous product improvement.